

**CARACTÉRISTIQUES**



- Pour toutes pressions de 0 à 2000 bar
- Pointeau non rotatif
- Matériau : 1.4571 (316 Ti)
- Fluides : liquides et gaz
- Etanchéité : métal / métal
- Température maximale : 170° C
- Tube HP : 1/8" ou 1/16"
- Raccordement HP par olive sertie
- Jeu nul entre pointeau et tige de commande

- Orifices de détection de fuite
- Pointeau standard ou de dosage (voir tableau)
- Toutes nos vannes sont équipées de vis et d'olives
- Diamètre de passage 1mm ou 1,5 mm

**OPTIONS**

- Autres matériaux : Hastelloy B2, C276, titane, etc.
- Pointeau rotatif
- Jusqu'à 300°C avec joint graphite
- ATEX sur demande

**FEATURES**

- Work at all pressures between 0 and 2000 bar
- Non rotating stem
- Material : 1.4571 (316 Ti)
- Work with both liquids and gases.
- Metal/Metal sealing.
- Maximum temperature : 170° C/ 212 F
- HP tubing : 1/8" or 1/16" O.D
- HP connection : gland nut.
- No play between stem and handle.

- Weepers for leak detection.
- Standard or regulating stem (see table).
- All our valves are equipped with collars and gland nuts.
- Orifice diameter: 1mm or 1.5mm

**OTHER OPTIONS**

- Alternative materials : Hastelloy B2, C276, titanium, etc.
- Rotating stem
- Maximum temperatures of up to 300°C using a graphite joint.
- ATEX on demand

**TECHNISCHE EIGENSCHAFTEN**

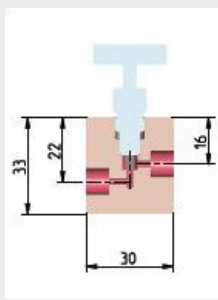
- Für alle Drücke 0 bis 2000 bar
- Nicht mitdrehendes Ventilspindel
- Material : 1.4571
- Medien : Flüssigkeiten und Gase
- Dichtung : Metall auf Metall
- Max betriebstemperatur : 170°C
- HD-Rohr : A Ø 1/8" (3,2 mm)
- HD-Rohranschluss mittels Klemmring
- Kein Totspiel zwischen Ventilspindel und

- Leckage - Entlastungsbohrungen
- Absperr, Dosierventil
- Alle Ventile mit Druckschrauben und + Klemmrings

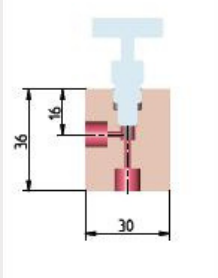
**OPTIONEN**

- Andere Werkstoffe : HB 2, C 276, etc
- Mitdrehende Ventilspindel
- Andere Temperaturen

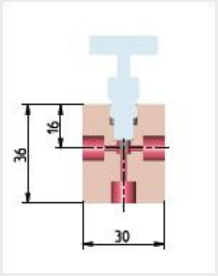
| WORKING PRESSURE | TUBE HP Ø EXT. |      | TYPE | Wheight | REFERENCE Orifice Ø 1 mm |           | REFERENCE Orifice Ø 1,5 mm |
|------------------|----------------|------|------|---------|--------------------------|-----------|----------------------------|
|                  | bar / psi      | inch |      |         | mm                       | gr        | Standard                   |
| 1000<br>14500    | 1/8"           | 3,2  | 1    | 120     | 910 10 00                | 912 10 00 | 917 10 00                  |
|                  |                |      | 2    | 130     | 910 20 00                | 912 20 00 | 917 20 00                  |
|                  |                |      | 3    | 130     | 910 30 00                | 912 30 00 | 917 30 00                  |
|                  |                |      | 4    | 140     | 910 40 00                | 912 40 00 | 917 40 00                  |
|                  |                |      | 5    | 180     | 910 50 00                | 912 50 00 | 917 50 00                  |
| 1000<br>14500    | 1/16"          | 1,6  | 1    | 120     | 110 10 00                | 112 10 00 | 117 10 00                  |
|                  |                |      | 2    | 130     | 110 20 00                | 112 20 00 | 117 20 00                  |
|                  |                |      | 3    | 130     | 110 30 00                | 112 30 00 | 117 30 00                  |
|                  |                |      | 4    | 140     | 110 40 00                | 112 40 00 | 117 40 00                  |
|                  |                |      | 5    | 180     | 110 50 00                | 112 50 00 | 117 50 00                  |
| 2000<br>29000    | 1/16"          | 1,6  | 1    | 120     | 210 10 00                | 212 10 00 | 217 10 00                  |
|                  |                |      | 2    | 130     | 210 20 00                | 212 20 00 | 217 20 00                  |
|                  |                |      | 3    | 130     | 210 30 00                | 212 30 00 | 217 30 00                  |
|                  |                |      | 4    | 140     | 210 40 00                | 212 40 00 | 217 40 00                  |
|                  |                |      | 5    | 180     | 210 50 00                | 212 50 00 | 217 50 00                  |



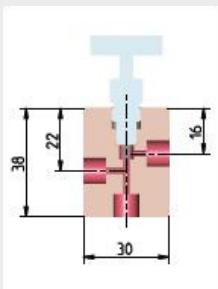
Type 1



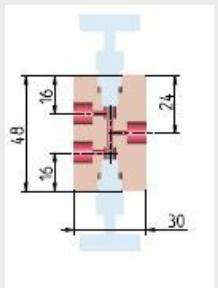
Type 2



Type 3



Type 4



Type 5

## MODE DE FIXATION

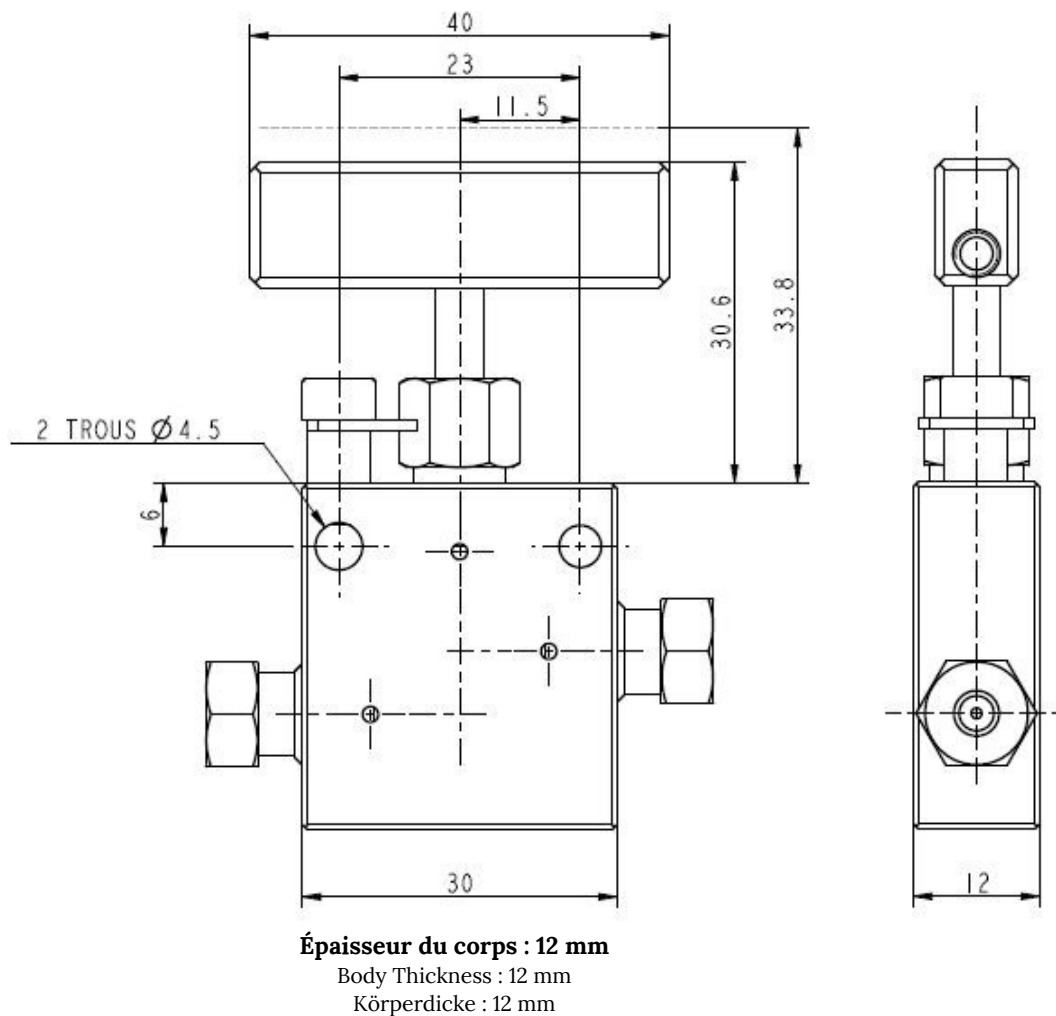
En tableau : 2 vis M6  
Avec équerre : 2 trous diamètre 6 mm  
Montage du tube : voir notice raccordement page B. 10  
Course totale de pointeau : 5 mm / 5 tours

## MOUNTING POSSIBILITIES

Panel mounting : Two M6 screws  
With bracket : Two  $\varnothing$  6 holes  
H.P connection : see page B10  
Stem movement : 5mm / 5 turns

## BEFESTIGUNGSWEISE

Für den Tafelbau : 2 Schrauben M6  
Mit Befestigungswinkel : 2 bohrungen  $\varnothing$  6 mm  
Rohrmontage : siehe Befestigungsanleitung Seite B.10  
Totaler Hb des Spindel : 5 mm / 5 Umdregungen



In view of possible technological advances in our production methods, products described in this manual are liable to be modified without prior notice.